



GENESIS 32™

Web Automation at Your Fingertips

Modular Suite of Automation Tools

Family of modular products for visualization, HMI and SCADA

One Development Tool for Multiple Targets

Single-development tool for workstations, servers, Pocket PCs, mobile devices, Web and Terminal servers. Runs on any Microsoft® Platform

OPC-To-The-Core™ Plug and Play Technology

You are a click away from your data. Integrate with standards like OPC Data Access, OPC XML, OPC Alarm Events, OPC HDA, OPC Data Bridging, OPC Aggregation, and OPC Redundancy

Web-Enabled Thin Client Requires No Installation

Connects to real-time and historical data over the Internet or intranets

Project Management and Deployment Tools

Easily deploy projects to target PCs. Collaborate and manage applications with Microsoft Visual SourceSafe® and more

Firewall Friendly and Integrates with Wireless Devices

Easily integrates with IT using OPC / SOAP and XML communications. Mobilize your work force with wireless devices

International Language Switching and Global Aliasing

Easily deploy machine applications globally. Create reusable graphics, trends and alarm applications with powerful Global Aliasing

Comprehensive Web and Wireless Based Security

Keep audit trails of authenticated account access with integrated NT security. Web and Wireless biometric identity support is optional

Powerful Data-Mining Technology

Data-mining Technology that integrates Database Connectivity between Microsoft Access, Microsoft SQL, Oracle, MSDE, Microsoft Excel and ODBC and OLEDB databases

Multimedia Alarming and Notification

Schedule and deliver alarms using phones, E-mail, pagers, fax and voice

Visual Control Replay Traceability Playback

Replay and animate graphics, historical, and alarm data from historical databases



"Harness the power of cutting-edge HMI / SCADA automation tools!"



Visualize Your Enterprise!™



11:13:10	1001	Flow	Flow rate is low	Flow rate is low
11:13:10	1002	Flow	Flow rate is high	Flow rate is high
11:13:10	1003	Flow	Flow rate is normal	Flow rate is normal
11:13:10	1004	Flow	Flow rate is low	Flow rate is low
11:13:10	1005	Flow	Flow rate is high	Flow rate is high
11:13:10	1006	Flow	Flow rate is normal	Flow rate is normal
11:13:10	1007	Flow	Flow rate is low	Flow rate is low
11:13:10	1008	Flow	Flow rate is high	Flow rate is high
11:13:10	1009	Flow	Flow rate is normal	Flow rate is normal
11:13:10	1010	Flow	Flow rate is low	Flow rate is low
11:13:10	1011	Flow	Flow rate is high	Flow rate is high
11:13:10	1012	Flow	Flow rate is normal	Flow rate is normal
11:13:10	1013	Flow	Flow rate is low	Flow rate is low
11:13:10	1014	Flow	Flow rate is high	Flow rate is high
11:13:10	1015	Flow	Flow rate is normal	Flow rate is normal
11:13:10	1016	Flow	Flow rate is low	Flow rate is low
11:13:10	1017	Flow	Flow rate is high	Flow rate is high
11:13:10	1018	Flow	Flow rate is normal	Flow rate is normal
11:13:10	1019	Flow	Flow rate is low	Flow rate is low
11:13:10	1020	Flow	Flow rate is high	Flow rate is high



GENESIS 32™

Web Automation at Your Fingertips

ICONICS GENESIS32™ is the industry's first and only fully scalable suite of OPC Web-enabled HMI and SCADA applications. Designed from the ground-up to take advantage of the entire range of Microsoft® Windows® operating systems, the GENESIS32™ Automation Suite delivers unparalleled performance and cost savings due to its OPC-To-The-Core™ design

OPC-To-The-Core is built entirely on standards, eliminating system database duplication during project development and protecting your investment via OPC Plug and Play connectivity and interoperability, with all major third-party applications, industrial networks and devices.

GENESIS32 is ideal for all industries. ICONICS has more than 150,000 systems running in over 15,000 plants worldwide. So, if your application is process or discrete ICONICS has the right automation product for you.

The following industries benefit from ICONICS GENESIS32 products:

- Automotive
- Building Management
- Food and Beverage
- Oil, Gas and Chemical
- Machine Builders
- Pharmaceutical and Biotech
- Security
- Water and Wastewater
- Utilities
- And many more ...

For further information call
508-543-8600
or visit our website
www.iconics.com



Choose any module or the complete suite for the ultimate Freedom of Choice in Automation Technology.



Visualize Your Enterprise!™

Modular Suite of HMI & SCADA Solutions

Award-winning, fifth-generation HMI and SCADA applications are available as a fully integrated suite or as modular components.

One Development Tool for Multiple Targets

The GENESIS32 development studio can be run on Microsoft® Windows® 98, Millennium, 2000, XP and Windows NT® operating systems. Web-enabled applications run on Web browsers and Terminal Servers as well as dedicated wireless Pocket PC, Windows CE, Embedded NT and Embedded XP devices.

OPC-To-The-Core Plug & Play Technology

Total cost of ownership is dramatically reduced as OPC-To-The-Core significantly simplifies system design, commissioning, maintenance and provides standards-based universal connectivity.

Web-enabled Thin Client Requires No Installation

WebHMI™ provides thin client browser capabilities for trending, alarming and operator graphics. Uses standard Microsoft® Internet Explorer and requires no installation on client machines. GENESIS32 is certified for Microsoft® Terminal Server technology.

Project Management and Deployment Tools

Deploy projects by simply packing and then unpacking the project on the target PC and by letting ProjectWorX32 do all the work! ProjectWorX32 integrates Microsoft® Visual SourceSafe technology, making large projects collaboration easy.

Firewall Friendly and Integrates With Wireless Devices

With ICONICS' GenBroker - OPC over SOAP / XML and TCP/IP communications technology, integrating with the corporate IT LANs, WANs and intranets is a Plug and Play operation. Mobilize your work force with wireless devices such as Pocket PCs, Mobil phones and PDAs. Ideal for mobile personnel, such as operators, supervisors and managers.

International Language Switching and Reusable Global Aliasing

OEMs and Machine Builders needing to deploy their systems anywhere in the world, can now define multiple language and engineering unit conversions for their machines. Easily create reusable graphics, trends and alarm applications with reusable Global Aliasing.

Comprehensive Web and Wireless Security

Web and server based authentication restricts user access with audit trails and security logs. Biometric identity support is optional.

Powerful Data-Mining Technology

Data-mining Technology that integrates Database Connectivity. GENESIS32 software components can have database connectivity and access similar to OPC connectivity. Included is a database connection wizard and database object browser for data-mining server configuration. This powerful data-mining technology provides read and write access between many types of databases and spreadsheets including Microsoft Access, Microsoft SQL, Oracle, MSDE, Web Services, Microsoft Excel, ODBC and OLEDB databases.

Multimedia Alarming and Notification

AlarmWorX™32 Multimedia is based on OPC Alarm and Events and provides alarm summary reporting and alarm logging to Access, MSDE, SQL and Oracle databases. Connect alarms to e-mail, faxes, telephones, marquees, pagers, instant messenger, SMS, GSM and voice systems. Be notified wherever you may be!

Visual Control Replay and Traceability Playback

VCRWorX32 enables historical data replay within your real-time graphic screens. The media-like control floats on top of GraphWorX32 screen and works just like a VCR or DVD player. Users can specify time and date ranges for replay, fast forward and rewind, change the replay speed, and search for key events, tags, or expressions.

Scalable Multiprocessor Distributed Architecture

Create HMI / SCADA applications from the smallest to large distributed systems.

Built-in Mission Critical Redundancy

DataWorX32™ integrates OPC data redundancy and OPC server bridging for non-stop operation.

100 Foxborough Blvd. Foxborough, MA 02035 USA, Tel: 508-543-8600, Fax: 508-543-1503
Europe BV, Tel: 31 252 228 588, Fax: 31 252 226 240 • England, Tel: 44 1384 27 55 00, Fax: 44 1384 40 16 42
Germany, Tel: 49 5723 74 98 69, Fax: 49 5723 74 98 79 • Australia, Tel: 61 29 898 3211, Fax: 61 29 898 3411
Czech Republic, Tel: 420 377 326 139, Fax: 420 377 183 424 • Italy, Tel: 39 347 8199250, Fax: 39 010 6014091
E-Mail: info@iconics.com Web: www.iconics.com

© 2005 ICONICS, Inc. All rights reserved. GENESIS, GENESIS32, Pocket GENESIS, Embedded GENESIS, GraphWorX, AlarmWorX, TrendWorX, DataWorX, ProjectWorX, VCRWorX, TraceWorX, WebHMI, GenBroker, ControlWorX, MachineWorX, ToolWorX, ToolBox, BizViz, ReportWorX, BridgeWorX, PortalWorX, MobileHMI, Visualize Your Enterprise, and OPC-To-The-Core are trademarks of ICONICS Inc. Microsoft, Windows, ActiveX, Visual C++, Windows NT, and Visual Basic are either registered trademarks or trademarks of Microsoft Corporation in the United States and/or other countries. IBM and PC are trademarks of International Business Machines Corp. Other product and company names mentioned herein may be trademarks of their respective owners.

Includes VCRWorX, New OPC XML, OPC DA 3.0 and Data Mining Technology

Summary

This new version of GENESIS32™ incorporates industry's first HMI data-mining capability and supports the newest OPC Foundation specifications, including OPC Data Access (DA) 3.0 and OPC XML 1.0. GENESIS32 Version 8 integrates several new capabilities and products, such as **VCRWorX™32** and **DataWorX™32**. VCRWorX gives customers a powerful tool for replaying archived alarm and trend history into their HMI/SCADA visualization systems. DataWorX32 provides patented OPC data bridging, tunneling and aggregation capabilities. GENESIS32 Version 8's new **open data-mining technology** allows automation and IT professionals to integrate real-time manufacturing and business information into a common, Web-enabled visualization dashboard.

Main Features & Benefits

- ✓ New open data-mining technology connects to Microsoft SQL Server, Oracle, Microsoft Access, ODBC, OLEDB, SAP®, and virtually any other database
- ✓ OPC Data Access (DA) 3.0 and OPC XML 1.0 compliance
- ✓ New VCRWorX32 replays archived historical data into HMI visualization screens
- ✓ New WebHMI supports OPC XML and OPC DA 3 language switching communications
- ✓ New TrendWorX™32 historical trend viewer for fast information analysis
- ✓ Expanded to two CDs. All options components are located on CD 2
- ✓ Hundreds of other new enhancements and features

One Development System ... Many Targets



New Generation of Visualization Software

GENESIS32 Version 8 represents a new generation of visualization, HMI and SCADA modular automation software designed for Microsoft's latest operating systems including Windows NT, 2000, Windows XP and Windows Server 2003.

GENESIS32 Version 8 represents over 20 man-years of development with over 500 new major features. GENESIS32 is based on 32-bit technology, taking advantage of key operating systems features of Windows NT technology. ICONICS is a Gold Certified Partner and has Gold Certification on its products, thus insuring compliance with the latest Microsoft technology.

GENESIS32 fully supports Windows NT, Windows 2000, Windows XP, Windows XP SP2, and Windows Server 2003 Symmetric multiprocessor and Hyper Threading systems.

Compliance With the Latest OPC Specifications

ICONICS products are based on the industry standard OPC-TO-THE-CORE Technology. GENESIS32 Version 8 now supports OPC Data Access 3.0 and OPC XML 1.0 connectivity. The following OPC specifications are supported by GENESIS32 Version 8.

- OPC Data Access 3.0
- OPC Alarm and Events 1.10
- OPC XML Historical Data Access 1.20
- OPC XML Data Access 1.0



Powerful Data-mining Technology

New Data-mining Technology that integrates Database Connectivity. Now GENESIS32 software components can have database connectivity and access similar to OPC connectivity. Included is a database connection wizard and database object browser for data-mining server configuration. This powerful data-mining technology provides reads and writes between many types of databases and spreadsheets including:

- Microsoft Access
- Microsoft SQL
- Oracle 8.x and 9.x
- MSDE
- Microsoft Excel
- ODBC and OLEDB databases

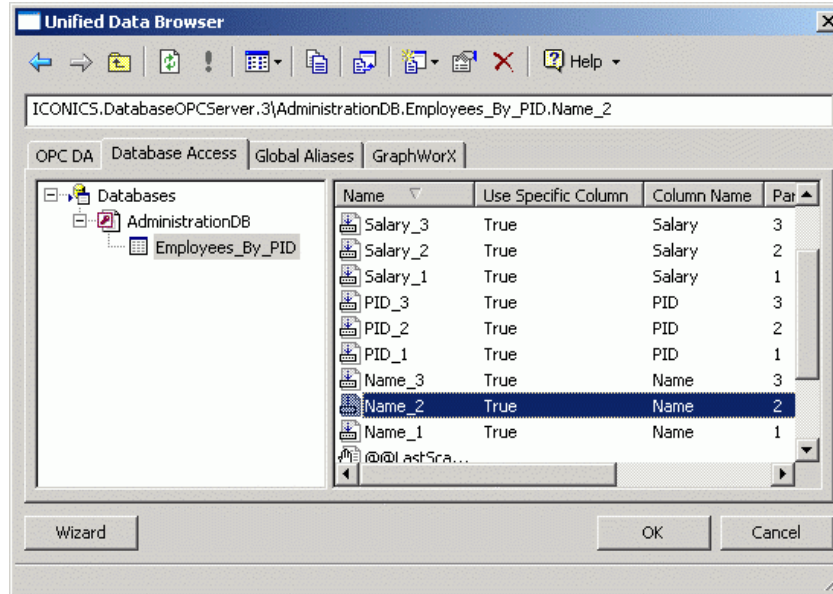


New Data Mining ActiveX Control provides the ability to view whole tables, rows, or columns from any open database. It is now easy to connect to databases through ADO, OLEDB, ODBC, Access, JET, TEXT, or CSV.



New Unified Data Browser

The new Unified Data Browser in GENESIS32 Version 8 allows common and unified data browsing for OPC Data Access, OPC Alarm/Events, and OPC Historical Data Access tags. In addition to supporting OPC data sources, the new Unified Data Browser now allows support for global aliases and database data browsing. The graphical user interface has been updated with a Windows XP look and feel as well as local and language aliasing, and the multi-threading allows for better performance than in previous browsers.



VCRWorX32 - New Modular for Historical Playback

VCRWorX32 is a powerful tool in GENESIS32 that enables the replay and reanimation of graphical, historical and alarm data. Features of VCRWorX32 replay include:

- Replay of OPC data
- Reanimation of graphics
- Re-plotting of trends
- See what the operator saw through replay of graphical displays
- VCRWorX32 Control Panel with customizable skins/layouts
- Change the replay speed
- Specify time and date ranges for data replay
- Search for key events, tags, and expressions



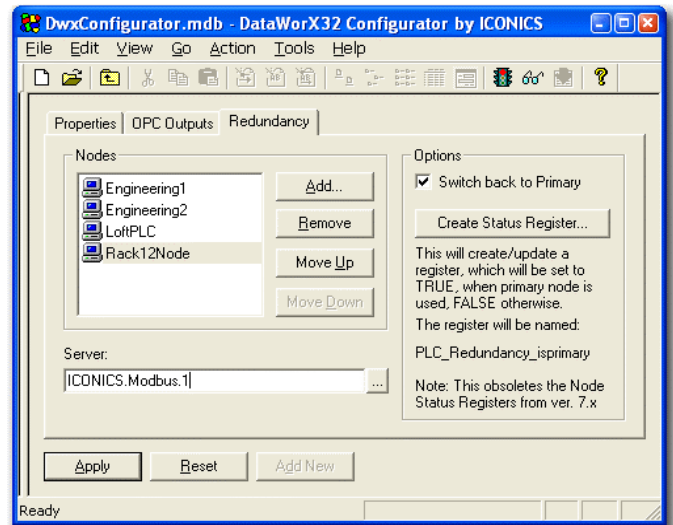
The VCRWorX32 Control Panel is the interactive user interface that enables the historical data replay time and date settings. This control floats on top of your GraphWorX32 screen and works just like your VCR or DVD controls used to playback your favorite movies. From this intuitive control operators can



specify time and date ranges for replay, fast forward and rewind, change the replay speed, and search for key events, tags, or expressions. The appearance of the VCRWorX32 Control Panel is fully customizable with the ability to select a different skin and complete customization of the layout. The VCRWorX32 Control Panel can be launched from the GraphWorX32, AlarmWorX32, and TrendWorX32 containers during runtime mode with one click from the Tools menu.

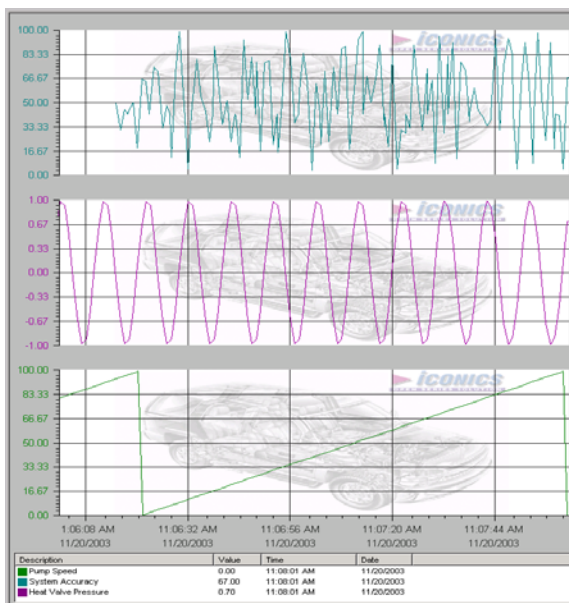
DataWorX32 - “OPC Data Bridging, OPC Aggregation, OPC Redundancy”

DataWorX32 is a 32-bit, multithreaded, OPC-compliant client and server application providing multiple functionality and designed to run as an NT service. DataWorX32 is a component of the GENESIS32 product family, and it serves as a project-level data system for GENESIS32 applications. Acting as a bridge between various OPC servers, DataWorX32 provides different OPC data channels. Once multiple I/O channels are established between PCs, DataWorX32 will switch between a primary PC (node) and a backup PC on the network. Should the primary PC be disabled, DataWorX32 will automatically default to the backup PC and vice versa. Another feature of DataWorX32 is the use of global variables that are accessible from multiple clients.

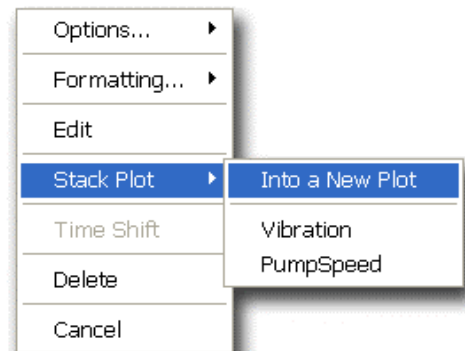


New TrendWorX32 Features

The award-winning TrendWorX32 component of GENESIS32 keeps getting better. Version 8 users can now take advantage of stackable plots, allowing for quick trending comparisons and analysis. Operators can drag and drop pens among different trend plots for optimal viewing. Tick marks, chart titles and labels are now completely configurable. Also new in Version 8 is the ability to have a background image for plots, adding another visualization and identity to plots. OEMS can even embedded their logo into the background of plots.

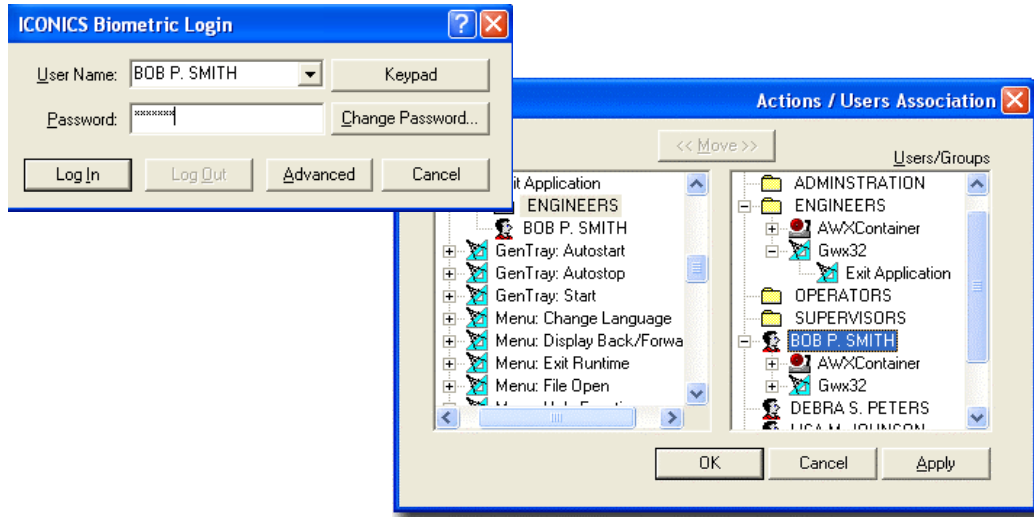


Simply right-click on a pen during runtime and use the new Stack Plot menu to tell the viewer to plot the pen in another sub-window.



New Biometrics & Identity Assurance Management

The ICONICS Security Server now supports biometric identity assurance with the added support for Saflink's Identity Assurance Management software. The integration of biometrics authentication with the ICONICS HMI/SCADA Automation Suite provides maximum security for user identification, making GENESIS32 a more robust and secure HMI/SCADA system for regulated applications. Saflink's Identity Assurance authentication has been deeply integrated with the ICONICS Security Server architecture. This new level of integration provides ICONICS users with the option to use Biometrics for operator authentication. Identity assurance is critical to meeting current and future business security requirements and more government regulations, such as FDA, that are designed to protect public health, safety and privacy.



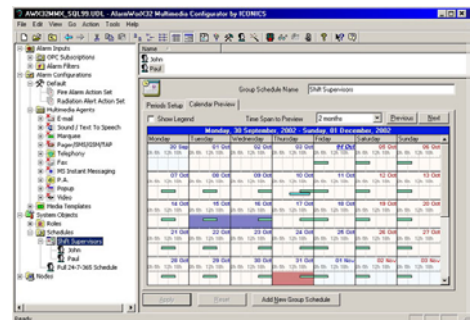
Introducing AlarmWorX32 Multimedia Lite

In addition to several key features, AlarmWorX32 Multimedia will now be offered in two different configurations: Standard edition and a Lite version.

AlarmWorX32 Multimedia Standard Edition – Multimedia package that connects to any OPC Alarm and Events server. Comes with complete multimedia agents including Paging, SMS, E-mail, Fax, Popup, Marquee, Video, Messenger, Phone, and Sound.

AlarmWorX32 Multimedia Lite – All the power of AlarmWorX32 Multimedia Standard but with a limited set of agents. AlarmWorX32 Multimedia Lite comes with the following agents: Paging, SMS, E-mail, Popup and Marquee. In addition to the new Lite version, AlarmWorX32 Multimedia V8 also offers the following:

- Send multiple page requests via the same connection
- Paging algorithm enhanced for faster performance
- E-mail Agent now supports acknowledgements
- Pitch, volume and playback support for Sound Agent
- Plug-in card configuration added to Fax Agent
- Phone Agent now supports real-time alarm processing



New WebHMI features

This optional component to GENESIS32 adds Web technology to any GENESIS32 application and delivers Web-based graphics in real-time to remote Web browsers. GENESIS32 WebHMI is firewall friendly, requires no installation on the remote clients and supports DHCP, DNS, Name Address Translation, and Windows Domains. WebHMI V8 offers the following new features.

- New Web-based language switching
- New Web-based VCRWorX32 playback capabilities
- New login and security ActiveX control
- New FTP upload for WebHMI publishing

New GENESIS32 Vertical Markets Applications

Several new vertical industry applications have been added to the GENDEMO application. Select from one of the 48 real-life applications. Vertical markets include Building Control, Water & Wastewater, Food & Drug, Machine Builders, Oil & Gas, Automotive, Transportation, and more. In addition to the new vertical industry applications, GENESIS32 has a few added features to the Carousel application for running GraphWorX in a demo slide show mode. The following new key features have been added to the Carousel.

- Runtime selectable display lists
- Interface to indicate current display and timing
- User definable display list and flip time

GENESIS32 Version 8 has several hundred new features and enhancements, only a subset are covered in this product brief. For a complete list of all new features, please refer to the readme file located on the GENESIS32 main CD.

Cost Savings and Productivity

The market is demanding solutions that provide a real-time visualization connection to databases such as Microsoft SQL Server®, MSDE, Oracle®, and Microsoft Access, as well as the integration of real-time manufacturing and business visualization. ICONICS' newest HMI/SCADA visualization product incorporates several unique capabilities that address this market demand, such as VCR-like replay functions, which allow users to view history through their HMI systems.

ICONICS has been providing award-winning, industrial automation and business visualization software for over 18 years, and has successfully deployed more than 130,000 solutions wide. For more information, please contact ICONICS at (508) 543-8600 or info@iconics.com, or visit the ICONICS Web site at www.iconics.com.



Operating Systems Supported

GENESIS32 fully supports all the Microsoft Windows 32 bit operating systems including:

- Windows NT
- Windows XP
- Windows XP SP2
- Windows 2000 Server
- Windows 2000 Workstation
- Windows Server 2003

System Requirements

GENESIS32 requires the following hardware and software components: System requirements may vary based on application size and system performance requirements and loading factors.

Minimum Hardware and Operating System Requirements:

- 600 MHz or higher processor.
- 256 MB RAM or more if running with OPC servers.
- At least 600 MB of available hard disk space.
- CD ROM Drive
- A SVGA monitor (256 colors) or better.
- Windows NT 4.0, Windows 2000, Windows XP Professional, or Windows Server 2003.
- A mouse or other compatible pointing device.

ICONICS, Inc.,
100 Foxborough Blvd., Foxborough, MA 02035
Telephone: 508-543-8600 Fax: 508-543-1503
E-mail info@iconics.com www.iconics.com

