

# A global offer for Lexium™ Servo drives and motors motion control systems



## Expertise

Building on the foundation of its strong Modicon® brand PLCs, Telemecanique™ controls, and its leading motion control brand Num, Schneider Electric provides a winning combination to solve all your automation needs.

## Productivity

Schneider Electric's global offer is the answer to growing productivity needs. It integrates state-of-the-art technology to deliver the highest performance and quality at the best price.

## Services

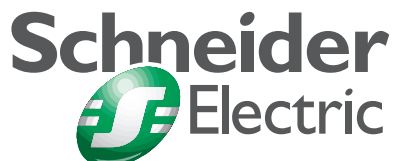
Schneider Electric works closely with machine builders and end-users to offer a complete system, including application program development, training, and installation support.

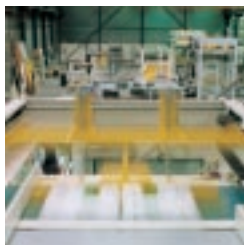
**Merlin Gerin**

**Modicon**

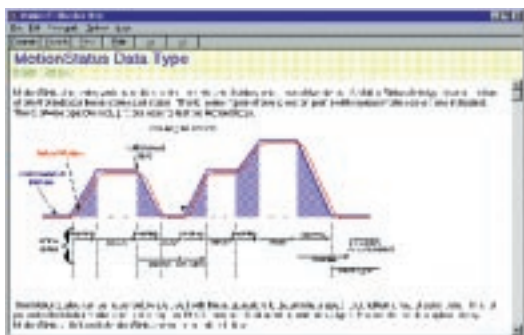
**Square D**

**Telemecanique**





## Brushless servomotors and drives for motion applications



Motion programming help screen

### Openness

The Schneider offer conforms to the international standard for interfacing motion controllers and intelligent drives. This distributed solution improves performance and reliability, reduces wiring costs and eliminates many grounding and shielding problems. The SERCOS interface enables the drives to be networked, facilitating the sharing of status and diagnostic information with supervisory controllers.

### Performance

Schneider brushless servomotors deliver high torque-to-inertia in a compact size with a variety of feedback and mechanical options. Schneider drives are fully digital and provide high performance, configurable servo loop control in a small footprint enclosure. Drives and motors carry global agency approvals and can be operated from a wide range of supply voltages.

### Integration

Schneider integrated solutions minimize the time and risk involved in commissioning a new motion control application. Matched motor/drive combinations ensure accurate, up-front specification of servo performance. A unified programming environment simplifies training and maintenance and reduces cost over the product lifetime.

| Motor characteristics |   |
|-----------------------|---|
| Torque range          | 0,4 -100 Nm   |
| Feedback options      | Resolver, Single/multi-turn absolute encoder            |
| Sealing               | IP65 standard, IP67 optional                            |
| Mechanical            | DIN 42955R  |
| Brake                 | Optional  |
| Agency approval       | CE, UL, CuL   |
| Drive characteristics |   |
| Current               | 4,8,17, 28 and 56 amp (peak)                            |
| Operating voltage     | 230-480 VAC   |
| Bias supply           | 24V DC  |
| Width                 | 70mm (up to 28A), 120mm (56A)                           |
| Controller interface  | SERCOS, +/-10V, Step/Direction, Serial Ascii            |
| Feedback interface    | Resolver, single/multi-turn absolute encoder            |
| Simulated encoder     | Incremental and SSI output                              |
| Electronic gearing    | Programmable gearing to external encoder                |
| Positioner            | 256 programmable move profiles (180 permanently stored) |
| Servo loops           | 62.5 usec current loop, 250 usec velocity/position loop |
| Discrete Inputs       | 4 programmable, 1 dedicated enable                      |
| Discrete Outputs      | 2 programmable, 1 dedicated fault relay                 |
| Analog Inputs         | 14 bit (1), 12 bit (1)                                  |
| Analog Outputs        | 10 bit (2)  |
| Agency approval       | CE, UL, CuL   |
| I/O Expansion         | 14 Inputs, 8 Outputs                                    |

Schneider Automation Inc.  
 North America  
 1 High Street  
 North Andover, MA 01845  
 Tel: 978-794-0800  
 Fax: 978-975-9400

Marketing Headquarters  
 5, rue Nadar  
 92566 Rueil-Malmaison  
 Cedex France  
 Tel: +33 (0) 1 41 29 82 00  
 Fax: +33 (0) 1 47 51 80 20

Visit our website at  
[www.schneiderautomation.com](http://www.schneiderautomation.com)